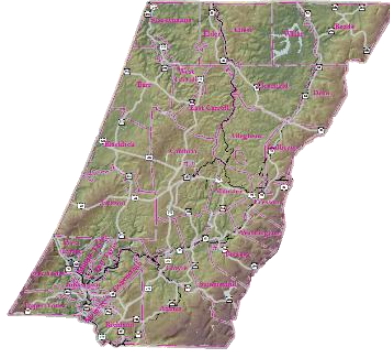


To see infrastructure and boundaries click on the image to go to our GIS website.



[City of Johnstown](#) - Located in the rural mountains of Pennsylvania, the City of Johnstown is a center of history, family and economic activity. From the Johnstown Flood Museum to our friendly neighborhoods and High Tech companies, see what The City of Johnstown has to offer. Come and Join us as we move to the future.

[Adams Township](#) - If you are looking for a special place to call home, where a sense of community still exists, and where history and tradition still matter, you have chosen the right place. Truly a special place to live!

[Blacklick Township](#) - a rural area north of the boroughs of Nanty Glo and Vintondale, comprising the area of Cambria County west of Cambria Township to the Indiana County line. Presumably named for the Blacklick Creek which is its main waterway, the township is bisected by US Highway 422, which connects US 22 at Ebensburg to Indiana, Pa.

[Cambria Township](#) - Sitting at the crossroads of Cambria County's three major highways, and surrounding the county seat of Ebensburg, Cambria Township reflects the best of the past and the hopes for the future. Whether it's the rolling farm fields, quaint country churches or small villages, we are proud to preserve the past.

At the same time, we welcome the future as the host site of the Cambria County's Industrial Park, the Route 22 Business District and the Gamesa windmill turbine plant.

[Carrolltown Borough](#) – is an incorporated borough located in north central Cambria County at latitude 40.603 and longitude -78.709. The elevation is 2,175 feet. Carrolltown appears on the Carrolltown U.S. Geological Survey Map. Cambria County is in the Eastern time zone (GMT -5). Carrolltown had a population of 1049 with 4490 housing units; a land area of 0.66 sq. miles; a water area of 0sq. miles; and a population density of 1,583.76 people per sq. Mile. for Census 2000.

[Cresson Borough/Township/Sankertown](#) - The Cresson Area sits atop the Allegheny Highlands in Cambria County, Pennsylvania. It is intersected by Pa route 53 and us route 22. The area is located between Altoona to the east and Johnstown to the Southwest. The Cresson Area consists of the communities of Cresson Borough, Cresson Township and Sankertown Borough. Incorporation dates for the three communities are Cresson 1906, Cresson Township 1893 and Sankertown 1906. Surrounding communities include the boroughs of Ashville, Gallitzin, Lilly, Loretto and Tunnelhill. Surrounding townships include Allegheny, Dean, Gallitzin, Munster and Washington. These communities make up the Penn Cambria School District.

[East Conemaugh Borough](#) -We are located in southern Cambria County, Pennsylvania, approximately 2 miles from the City of Johnstown and 70 miles from the City of Pittsburgh. Size : East Conemaugh Borough encompasses 0.3 square miles; Population: Approximately 1,200 residents; Type of Government: Municipal, consists of a borough council; Type of Area: Our area primarily consists of residential dwellings and small commercial occupancies. Public Safety: We are protected by (1) volunteer fire department and (1) paid police department. Neighboring Municipalities include: Franklin Borough, East Taylor Township, Conemaugh Township, Daisytown Borough, and the City of Johnstown. School Districts: East Conemaugh Borough is located in the Conemaugh Valley School District.

[East Taylor Township](#) - contains Saltlick Dam which was completed in 1914 near Mineral Point. The capacity of this dam is 814 million gallons of water which is used for domestic and industrial purposes.

Nearby is the right-of-way of the Cambria County Trolley line. Besides linking Johnstown with Ebensburg, there were also spur lines to Woodvale Heights, South Fork and Nanty-Glo. In East Taylor Twp, Parkhill, Echo, Brookdale, and Mineral Point, each with a descriptive name, were stations along the route. A tragic accident occurred in the township near Brookdale, the site of the car barn, when a head on crash occurred between two cars on Aug 12, 1916. Twenty persons were killed outright in this accident which has no equal in the transportation history of the county. Written in The Pittsburgh Press, Sunday, January 11, 1916; by Joe Bennett.

[Ebensburg Borough](#) – is the seat of Cambria County government, is situated on a plateau in the geographic center of the county along the eastern fringe of the Laurel Hill Ridge. Ebensburg is located 19 miles north of the City of Johnstown, 24 miles west of the City of Altoona, 74 miles east of Pittsburgh, and 140 miles west of Harrisburg. The Borough has a population of 3,684 and encompasses 1.7 square miles. From its humble beginnings as the landing site of the Welsh advance party to its fame as a mountain resort, Ebensburg has enjoyed continuous prosperity while retaining its small town charm.

[Ferndale Borough](#) - Ferndale is a borough in Cambria County, in the Johnstown metro area. The latitude of Ferndale is 40.288N. The longitude is -78.915W. It is in the Eastern Standard time zone. Elevation is 1,198 feet. The estimated population, in 2003, was 1,759.

[Hastings Borough](#)

[Jackson Township](#) - rural and suburban communities are nestled among some of the most scenic areas in the state. Whether it's a drive along the ridge tops or taking a walk along Simmons Lane, the beauty is breathtaking.

Wonderful people, a variety of excellent churches, well respected schools and a neighborly attitude make Jackson Township a desirable friendly place to live. Make it a point to get to know your neighbors and your neighborhood, and to keep our children safe.

Cambria County has 444,000 acres within its boundaries and Jackson Township's portion takes in 30,377 acres or 47.04 square miles. However, 8,451 acres are developed, leaving 21,926 acres of land remaining undeveloped.

[Lilly Borough](#)

[Lorain Borough](#)

[Nanty-Glo Borough](#)

[Northern Cambria Boro](#)

[Patton Borough](#)

[Portage Borough](#)

[Portage Township](#)

[Richland Township](#)

[Southmont Borough](#)

[Tunnelhill Borough](#)

[White Township](#)